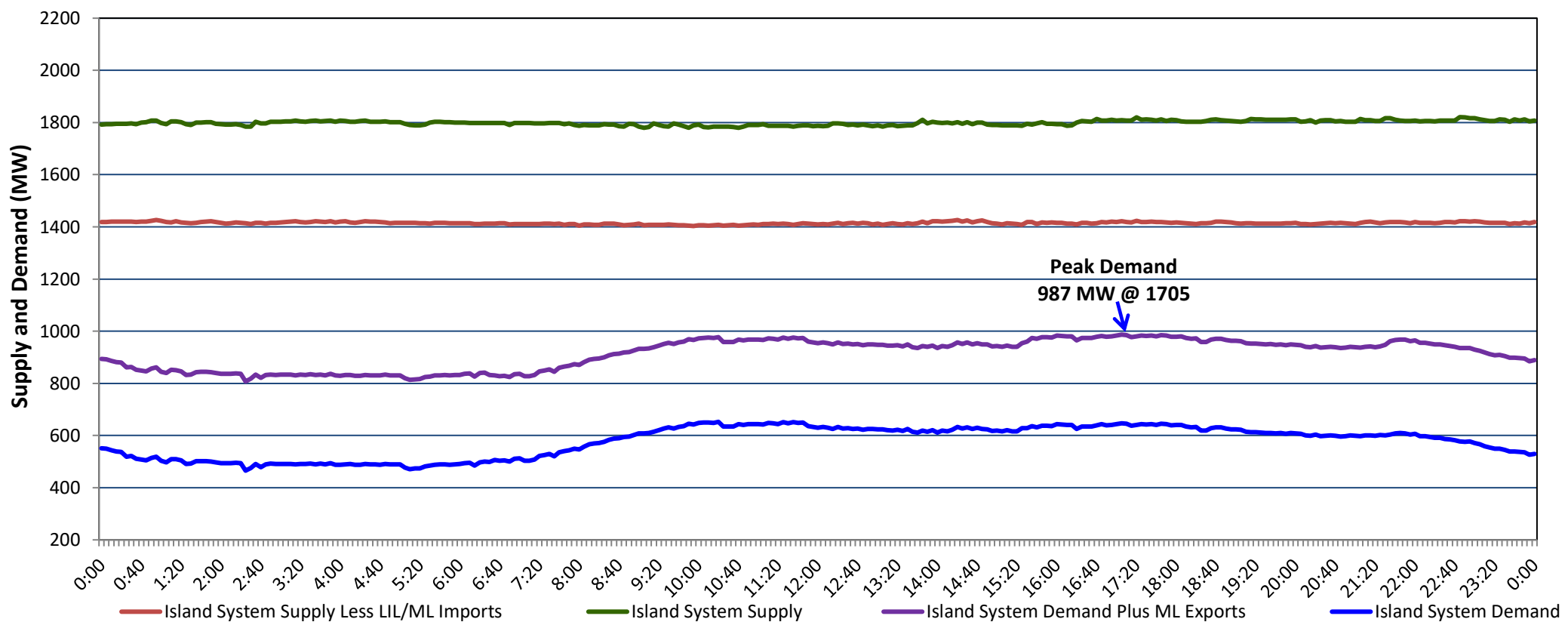


Newfoundland Labrador Hydro (NLH) Supply and Demand Status Report Filed Tuesday, July 11, 2023

Section 1 Island Interconnected System Supply, Demand & Exports Actual 24 Hour System Performance For Saturday, July 08, 2023



Supply Notes For July 08, 2023

1,2

- A As of 0701 hours, March 06, 2023, Upper Salmon Unit unavailable (84 MW).
- B As of 0800 hours, May 21, 2023, Holyrood Unit 2 unavailable due to planned outage (170 MW).
- C As of 0903 hours, June 29, 2023, St. Anthony Diesel Plant available at 8.85 MW (9.7 MW).
- D As of 0856 hours, July 01, 2023, Holyrood Unit 3 available but not operating (150 MW).
- E As of 2019 hours, July 07, 2023, Hardwoods Gas Turbine available at 25 MW (50 MW).

Section 2 Island Interconnected Supply and Demand

Sun, Jul 09, 2023	Island System Outlook ³			Seven-Day Forecast	Temperature (°C)		Island System Daily Peak Demand (MW)	
					Morning	Evening	Forecast	Adjusted ⁷
Available Island System Supply: ⁵	1,792	MW		Sunday, July 9, 2023	16	12	1,030	1,030
NLH Island Generation: ^{4,8}	1,095	MW		Monday, July 10, 2023	12	12	710	710
NLH Island Power Purchases: ⁶	100	MW		Tuesday, July 11, 2023	12	12	730	730
Other Island Generation:	210	MW		Wednesday, July 12, 2023	12	12	715	715
ML/LIL Imports:	387	MW		Thursday, July 13, 2023	16	14	725	725
Current St. John's Temperature & Windchill:	16 °C	N/A °C		Friday, July 14, 2023	17	16	715	715
7-Day Island Peak Demand Forecast:	1,030	MW		Saturday, July 15, 2023	18	18	735	735

Supply Notes For July 09, 2023

3

- F At 0800 hours, July 09, 2023, Holyrood Unit 1 unavailable due to planned outage (170 MW).

- Notes:
1. Generation outages for running and corrective maintenance are included. These are not unusual for power system operations. They generally do not impact customer supply. The power system operators schedule outages to system equipment whenever possible to coincide with periods when customer demands are low and sufficient supply reserves are available. However, from time to time equipment outages are necessary and reserves may be impacted.
 2. Due to the Island system having no synchronous connections to the larger North American grid, when there is a sudden loss of large generating units there may be a requirement for some customer's load to be interrupted for short periods to bring generation output equal to customer demand. This automatic action of power system protection, referred to as under frequency load shedding (UFLS), is necessary to ensure the integrity and reliability of system equipment. Under frequency events have typically occurred 5 to 8 times per year on the Island Interconnected System and the resultant customer load interruptions are generally less than 30 minutes. With the activation of the Maritime Link frequency controller during the winter of 2018, UFLS events have occurred less frequently.
 3. As of 0800 Hours.
 4. Gross output including station service at Holyrood (24.5 MW) and improved NLH hydraulic output due to water levels (35 MW).
 5. Gross output from all Island sources (including Note 4).
 6. NLH Island Power Purchases include: CBPP Co-Gen, Nalcor Exploits, Rattle Brook, Star Lake, Wind Generation and capacity assistance (when applicable).
 7. Adjusted for curtailable load, market activities and the impact of voltage reduction when applicable.
 8. Due to limitations inherent in the design of combustion turbines, the output of combustion turbines may be reduced in the event that ambient temperatures exceed the threshold

Section 3 Island Peak Demand Information Previous Day Actual Peak and Current Day Forecast Peak

Sat, Jul 08, 2023	Actual Island Peak Demand ⁹	17:05	987 MW
Sun, Jul 09, 2023	Forecast Island Peak Demand		1,030 MW

- Notes: 9. Island Demand / LIL / ML Exports (where applicable) is supplied by NLH generation and purchases, plus generation owned and operated by Newfoundland Power and Corner Brook Pulp & Paper (Deer Lake Power, DLP).